



1, 2 & 3 PIECE BALL VALVES
TRUNNION VALVES
FLANGED VALVES & TOP ENTRY VALVES
3 WAY / 4 WAY / 5 WAY BALL VALVES
METAL SEATED BALL VALVES
SPECIALTY VALVES
PRODUCT OVERVIEW

QUALITY | EXPERTISE | PRODUCT RANGE

ONE & TWO PIECE BALL VALVES

FSLD1100 SERIES

2000 psi One Piece Ball Valve
Fire safe to API 607, 4th Edition
Adjustable stem packing, no leakage paths through body, blow-out proof stem, 150 psi saturated steam
MTRs available, NACE MR0175

Size	1/4" - 2"
Body Material	316, WCB
Trim Material	316, WCB
Packing Material	PTFE or Graphoil
Port	Reduced port
End Connections	NPT
Temperature	-20°F to +375°F
Seat Materials	RPTFE



FSLD3900F SERIES

3000 psi Two Piece Ball Valve
Fire safe to API 607, 4th Edition
Adjustable packing, seal-welded body, silicone-free, blow-out proof stem
MTRs available, NACE MR0175

Size	1/4" - 2"
Body Material	WCB, 316, Alloys
Trim Material	316, 17-4 stem, Alloys
Packing Material	PTFE or Graphoil
Port	Full port
End Connections	NPT, metric
Temperature	-50°F to +600°F
Seat Materials	Delrin, PEEK

3700 SERIES

1000 psi Two Piece Full Port Ball Valve
Adjustable packing, silicone-free
Blow-out proof stem
Anti-static stem
Pressure 1,000 psi

Size	1/4" - 3"
Body Material	316
Trim Material	316
Packing Material	PTFE or Graphoil
Port	Full port
End Connections	NPT, metric
Temperature	-29°F to + 300°F
Seat Materials	PTFE
Options	Locking handle, Stem extension, Oval handle



FSLD3500 SERIES

2000 psi Two Piece Ball Valve

Fire safe to API 607, 4th Edition

Adjustable packing, seal-welded body, silicone-free, blow-out proof stem
ISO 5211 mounting pad, MTRs available, NACE MR0175

Size	1/4" - 3"
Body Material	WCB, 316
Trim Material	316, 17-4 stem
Packing Material	PTFE or Graphoil
Port	Full port
End Connections	NPT, metric
Temperature	-29°F to +600°F
Seat Materials	TFM, TFM 4215
Options	Locking handle, Stem extension, Limit switch, Spring handle



DM3800F SERIES

1000 psi Two Piece Ball Valve

ISO 5211 direct mounting pad

Live loaded packing, silicone-free, blow-out proof stem
MTRs available



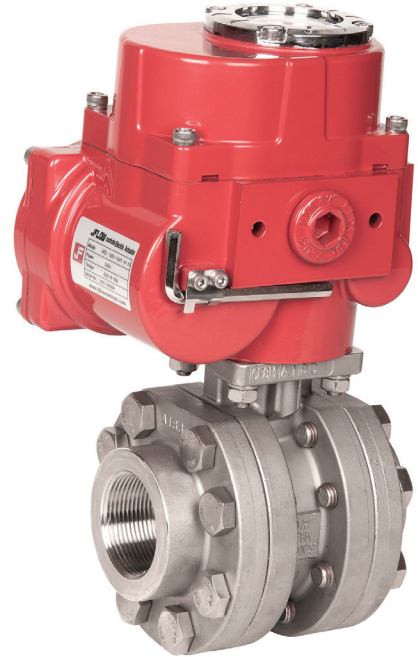
Size	1/4" - 3"
Body Material	304, 316, 316L
Trim Material	304, 316
Packing Material	PTFE
Port	Full port
End Connections	NPT, metric
Temperature	-29°F to + 300°F
Seat Materials	Teflon
Options	Locking handle, Stem extension, Limit switch, Spring handle

THREE PIECE BALL VALVES

DM4800 SERIES

3600 psi, Three Piece Ball Valve
ISO direct mounting pad, Fire safe to API 607, 7th Edition
Live-loaded packing, encapsulated seat with locking handle, B16.34
MTRs available
CRN Registration Number available, LDAR Compliant ISO-15848,
TA Luft certification

Size	1/4" - 3"
Body Material	WCB, 316, Alloys
Trim Material	316, Alloys; Stellite ball
Packing Material	PTFE or Graphoil
Port	Full port
End Connections	Threaded, SW, BW, ESW, Flanged ANSI 150 - 1500
Temperature	-20°F to +1000°F
Seat Materials	PEEK, Delrin, Metal, TFM 4215, Carbon PEEK
Options	Chainwheel, Fusible link, Extended bonnet, Spring handle



DMCF7300 SERIES

1000 psi, Tri-Clamp Valve with 10Ra Interior Finish
ISO 5211 direct mounting pad
Blow-out proof stem, cavity-filled, sanitary three piece ball valve
Live-loaded packing, 3A certified
MTRs available

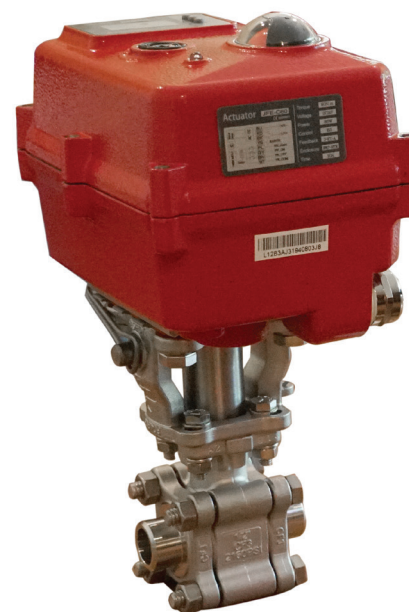


Size	1/4" - 4"
Body Material	316, Alloy 20, Duplex, Monel
Trim Material	316, Alloy 20, Duplex, Monel
Packing Material	PTFE, Graphoil, TFM
Port	Full port
End Connections	Tri-clamp, BW, Tube
Temperature	-20°F to +600°F
Seat Materials	Teflon, TFM, TFM 4215
Options	CIP/SIP self-flushing, non-cavity filled, Spring handle

DM4600 SERIES

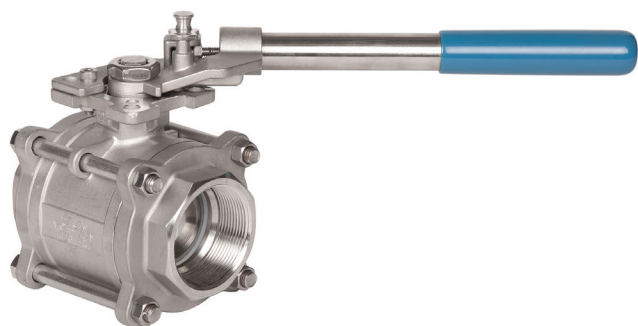
2000 psi, Three Piece, High Performance Valve, B16.34, Fire safe to API 607, 7th Edition, ISO 5211 direct mounting pad, live-loaded packing, blow-out proof stem, anti-static, silicone-free MTRs available, LDAR Compliant ISO-15848, TA-LUFT Emissions certification, CRN, UL certified

Size	1/4" - 3"
Body Material	WCB, 316, Alloy 20, Duplex, Alloys
Trim Material	316, Alloy 20, Duplex, Hastelloy C
Packing Material	PTFE, Graphoil, TFM
Port	Full port
End Connections	NPT, SW, BW, Flanged 150 - 600, metric threads
Temperature	-50°F to +650°F
Seat Materials	TFM 1600, TFM 4215, UHMPWE, Vespel, Metal Seated
Options	Cryogenic and fugitive emission bonnets
Certifications	UL certified for fluid types, certified to NSF/ANSI 372 and NSF/ANSI 61 Section 8-2017 by Truesdal Laboratory for drinking water



DM4500FTMTMS SERIES

ISO 5211 Direct Mounting Pad, Three Piece Ball Valve
1000 psi, live-loaded packing, blow-out proof stem, silicone free
MTRs available



Size	1/4" - 4"
Body Material	WCB, 316, Alloy 20, Duplex, Alloys
Trim Material	316, Alloy 20, Duplex, Alloy
Packing Material	PTFE, Graphoil, TFM
Port	Full port
End Connections	ANSI 150 - 300, NPT, SW, BW, metric threads
Temperature	-50°F to +450°F
Seat Materials	TFM 1600
Options	Oval handle, SR handle, Limit switch, Automation, Spring handle

9500F SERIES

Double Block & Bleed, Seal Welded Ball Valve
 API 6D, blow-out proof stem, NACE-certified
 Fire safe to API 607, 4th Edition
 B16.34, B16-10, ISO 5211 direct mounting pad
 MTRs available

Size	2" - 60"
Body Material	304, WCB, 316, LCB, LF2, F316, A105
Trim Material	316, 17-4 stem, Chrome, SS410
Packing Material	PTFE, Graphoil, TFM
Port	Full port and reduced port
End Connections	NPT, SW, ANSI 150 - 2500
Temperature	-50°F to +1000°F
Seat Materials	Nylon, RPTFE, TFM, Metal Seated, PEEK, Carbon PEEK, Tungsten Carbide, Stellite, Devlon
Options	Locking handle, Gear operator, Stem extension for buried service



9700F SERIES

Double Block & Bleed Ball Valve
 API 6D, blow-out proof stem
 Fire-safe to API 607, 4th Edition
 NACE certified, B16.34, ISO 5211 direct mounting pad
 MTRs available, CRN available

Size	2" - 60"
Body Material	WCB, 316, LCB, LF2, F316, A105
Trim Material	316, 17-4 stem, Chrome
Packing Material	PTFE, Graphoil, TFM
Port	Full port and Reduced port
End Connections	NPT, SW, ANSI 150 - 2500
Temperature	-50°F to +1000°F
Seat Materials	Nylon, RPTFE, TFM, PEEK, Carbon PEEK, Carbon TFM 4215
Options	Locking handle, Gear operator

9800 SERIES

Metal Seated Ball Valve
 API 6D, blow-out proof stem
 Fire-safe to API 607, 4th Edition
 NACE-certified, B16.34, B16.10, ISO 5211 direct mounting pad
 MTRs available

Size	2" - 60"
Body Material	WCB, 316, LCB, LF2, F316, A105
Trim Material	316, 17-4 stem, Chrome, SS410
Packing Material	PTFE, Graphoil, TFM
Port	Full port and Reduced port
End Connections	NPT, SW, ANSI 150 - 2500
Temperature	-50°F to +1000°F
Seat Materials	Metal Seated, Stellite, Tungsten Carbide, Inconel
Options	Locking handle, Gear operator



DM2700 SERIES

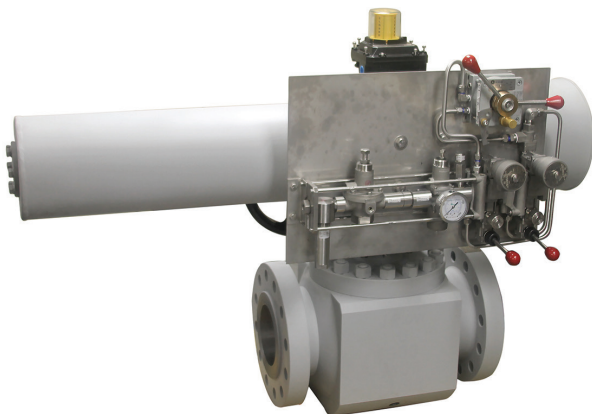
One Piece, Top Entry, ISO 5211 Direct Mounting Pad, Fire Safe design, ANSI 600, Convenient in-line repairable, one piece ball valve
Live-loaded packing, silicone-free, anti-static
LDAR Compliant ISO-15848, TA-LUFT Emission certification
MTRs available

Size	1/2" - 4"
Body Material	WCB, 316, Alloys
Trim Material	WCB, 316, Alloys
Packing Material	PTFE, Graphoil, TFM
Port	Reduced port
End Connections	SW, BW, NPT, Metric
Temperature	-50°F to +600°F
Seat Materials	TFM1600, TFM4215



9400 SERIES

Top Entry Ball Valve, Fire Safe to API 607, 4th Edition
Meets ASME B16.34, B16.5 & B16.10, ISO 5211 direct mounting pad
Seats compensate for wear, fluctuations of pressure/temperature
MTRs available



Size	Full: 1/2" - 10" Reduced: 1/2" - 12"
Body Material	A105, WCB, 316, F316, LF2, LCB, Alloys
Trim Material	316, Chrome, Alloys
Packing Material	PTFE, Graphoil, TFM
Port	Full port, Reduced port
End Connections	NPT, metric, BW, SW, ANSI 150 - 2500
Temperature	-50°F to + 1000°F
Seat Materials	TFM, RPTFE, UHMPWE, PEEK, Carbon PEEK, Metal Seated, Carbon TFM 4215

DM2600 SERIES

Top Entry Ball Valve, ANSI 150, ISO 5211 Direct Mounting Pad
 Silicone-free, anti-static, face-to-face interchangeability
 Locking handle
 MTRs available

Size	2" - 4"
Body Material	WCB, 316, 316L, 317, Alloys
Trim Material	WCB, 316, 316L, 317, Alloys
Packing Material	PTFE, Graphoil, TFM
Port	Reduced port
End Connections	ANSI 150
Temperature	-20°F to +600°F
Seat Materials	Super Teflon, Carbon TFM, TFM 4215
Options	Chainwheel, Fusible link, Extended bonnet



DM2500 SERIES

ANSI 150 & 300, ISO 5211 Direct Mount Flanged Ball Valve
 Fire safe to API 607, 7th Edition
 Blow-out proof stem, silicone-free, anti-static, live-loaded packing
 MTRs available
 CRN available, UL certified, NACE MR0175

Size	1/2" - 12"
Body Material	WCB, 316, LCB, Alloys
Trim Material	304, 316, Alloys
Packing Material	PTFE, Graphoil, TFM
Port	Full port and reduced port
End Connections	ANSI 150 & 300, DIN flanges
Temperature	-50°F to +1000°F
Seat Materials	TFM, Carbon TFM, PEEK, Metal Seated
Options	Cryogenic and fugitive emission bonnets, Locking handle, Gear operator



DMOB2500 SERIES

ANSI 150 Flanged V-Ball Control Valve
 Fire-safe to API 607, 7th Edition
 ISO 5211 direct mounting pad, live-loaded packing, self-adjusting packing,
 blow-out proof stem design
 MTRs Available, UL Certification, NACE MR 0175

Size	1/2" - 12"
Body Material	WCB, 316, Alloys
Trim Material	316, 17-4
Packing Material	PTFE, Graphoil, TFM
Port Design	Full Port, Reduced Port
End Connections	Flanged 150, 300
Temperature	-50°F to +1000°F
Seat Materials	TFM, Carbon TFM, PEEK, Carbon PEEK, Metal Seated Plate, TFM 4215
Options	Chainwheel, 15°, 30°, 60°, 90°, slotted V-ball, Locking handle, Gear Operator
Certifications	UL certified for fluid types, certified to NSF/ANSI 372 and NSF/ANSI 61 Section 8-2017 by Truesdail Laboratories for drinking water

9600 SERIES

Floating ball Flanged Ball Valve
 Fire safe to API 607, 4th Edition
 API 6D certified, B16.34, B16.10, ISO 5211 mounting pad
 NACE certified
 MTRs available, CRN available

Size	1/2" - 10"
Body Material	WCB, 316, A105, 304, LF2, LCB
Trim Material	304, 316, Chrome
Packing Material	PTFE, Graphoil, TFM
Port	Full port and Reduced port
End Connections	ANSI 150 - 600, RF, 600 RTJ, SW, BW, DIN Flanges
Temperature	-50°F to + 650°F
Seat Materials	Teflon, RPTFE, TFM, TFM 4215
Options	Fusible link, Extended bonnet, Chainwheel, Locking handle, Gear operator

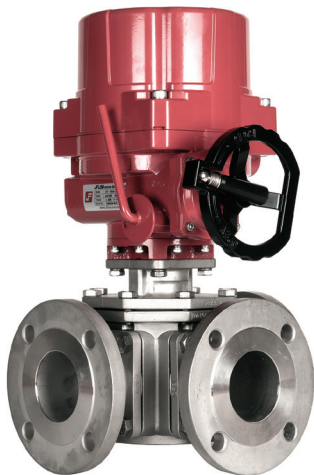


THREE, FOUR & FIVE WAY VALVES

DMCF3L/T2A33FTTKE SERIES

T-Port & L-Port, ISO 5211 Direct Mount Ball Valve
Cavity-filled, positive shut-off, in-line repairable, live loaded packing
Blow-out proof stem, 10 Ra interior finish, 800 WOG
MTRs available, 3A certified

Size	1/2" - 4"
Body Material	316, Alloys, WCB
Trim Material	316, Alloys
Packing Material	PTFE or Graphoil
Port	Full port
End Connections	Tri-clamp, BW, Tube, Flanged
Temperature	-50°F to +650°F
Seat Materials	PTFE, TFM, TFM 4215
Options	Automation, Limit switch, Locking & spring handle



DM4LL/T-2A33FTTF150 SERIES

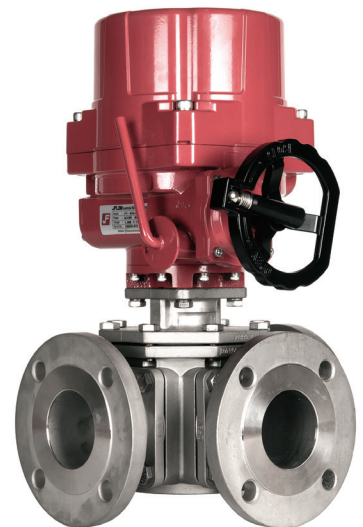
X Port, Double L, 4-Way, 5-Way, ISO 5211 Direct Mounting Pad
Self-adjusting packing, blow-out proof stem, 800 WOG
Silicone-free, four seats, positive shutoff, live loaded packing
MTRs available, CRN available

Size	1/2" - 16"
Body Material	WCB, 316, Alloys
Trim Material	316, 17-4 stem
Packing Material	PTFE or Graphoil
Port Design	Full port
End Connections	NPT, SW, BW, ANSI 150 & 300, DIN Flanges
Temperature	-20°F to +1000°F
Seat Materials	Super Teflon, Carbon, Carbon PEEK, Metal Seated, UHMPWE
Options	45° handle, Automation with accessories

3L/3T2A00 SERIES

Trunnion, 3 Way Ball Valve, T Port or L Port
API 6D, ISO 5211 direct mounting pad, live loaded packing
Blow-out proof stem, NACE certified, B16-34
MTRs available, CRN available

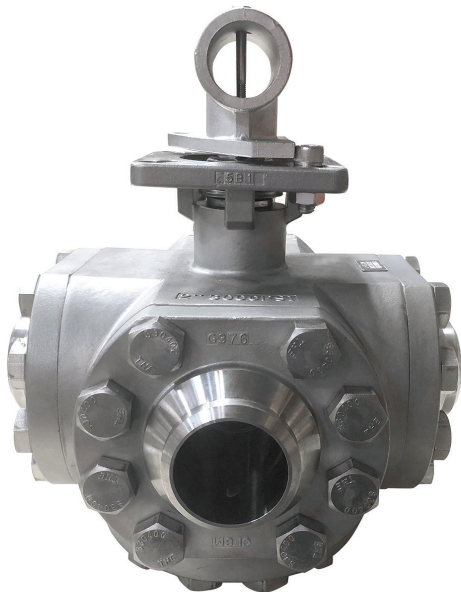
Size	2" - 16"
Body Material	WCB, 316, LCB, LF2, F316, A105, Alloys
Trim Material	316, 17-4 stem
Packing Material	PTFE or Graphoil
Port	Full port and Reduced port
End Connections	ANSI 150 - 900
Temperature	-50°F to +1000°F
Seat Materials	RPTFE, TFM, TFM 4215, Metal, PEEK
Options	Locking handle, Gear operator



DM3L/3T600 SERIES

ISO 5211 Direct Mount Ball Valve, Positive shutoff, Full Port
 Silicone-free, 3 ports, live loaded packing
 May be used as a block or flow port
 Blow-out proof stem, Side entry

Size	1/4" - 3"
Body Material	Bronze
Trim Material	Chrome, 316, 304
Packing Material	PTFE or Graphoil
Port	Full port, Reduced port
End Connections	NPT, metric
Temperature	-20°F to +300°F
Seat Materials	PTFE
Options	45° handle, Automation with accessories, Limit switch, Locking handle



DMHP3(4)L(T)2A00 SERIES

Side Entry, L/T/X, I Port, ISO 5211 Direct Mounting Pad, Trunnion Ball Valve
 Four seat design, positive shutoff, silicone-free
 Live-loaded packing, 3000 psi
 ANSI, 900/1500
 MTRs available

Size	1/4" - 2"
Body Material	WCB, 316, Alloys
Trim Material	316, Alloys
Packing Material	PTFE or Graphoil
Port	Full port
End Connections	NPT, Metric, BW, SW, ANSI Flanged 900, 1500
Temperature	-20°F to + 750°F
Seat Materials	PEEK, Carbon PEEK, Devlon
Options	45° handle, Automation with accessories

6800 SERIES

Spring Loaded Check Valve

High capacity, soft seated for bubble-tight shutoff

Spring loaded for fast sealing action, low cracking pressure

MTRs available

Size	1/4" - 3"
Body Material	Stainless Steel
Trim Material	Stainless Steel
Packing Material	PTFE or Graphoil
Port	Full port
End Connections	NPT
Temperature	+10°F to +450°F
Seat Materials	PTFE, TFM1600, TFM4215



DBDM4600/DBDM4800 SERIES

2000 & 3000 psi, Three Piece, Double Block & Bleed Ball Valve

Blow-out proof stem, ISO 5211 direct mounting pad

Fire safe to API 607, 7th Edition, high performance valve

MTRs available, UL Certification, NACE MR0175, LDAR Compliant

ISO-15848, TA-LUFT Emission Certification

Size	1/4" - 3"
Body Material	WCB, 316, Alloys
Trim Material	316, 17-4 stem, Alloys
Packing Material	PTFE or Graphoil
Port	Full port
End Connections	NPT, Metric, SW, Flanged, ANSI 150 - 900
Temperature	-50°F to +1000°F
Seat Materials	TFM 4215, PEEK, Carbon PEEK, TFM1600, Metal
Options	Locking handle, Stem extension, Limit switch

DBDM2500 SERIES

Two Piece Flanged Ball Valve, Fire Safe API 607, 5th Edition

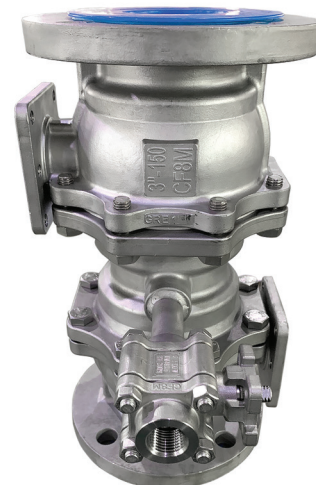
ISO 5211 direct mount, three piece, full port, live-loaded packing

Encapsulated seat with locking handle

MTRs available. UL Certification, NACE MR0175, LDAR Compliant

ISO-15848, LDAR Certification

Size	1/2" - 6"
Body Material	WCB, 316, Alloy 20, Hastelloy C, Super Duplex, Monel
Trim Material	316, Duplex, Alloy 20, Hastelloy C, Monel
Port Design	Full port
End Connections	ANSI 150#, Flanged 300#
Temperature	-100°F to +650°F
Seat Materials	Metal seated, PEEK, Super Teflon, Carbon Super Teflon, Carbon PEEK
Options	Locking handle, Stem extension, Limit switch



KE/KS SERIES

Through Conduit, Slab Gate Valves
 API 6FA fire safe design, double block & bleed
 Self-relieving seat, top entry bonnet
 Complies with API 6D / API 6D SS
 MTRs available, CRN available

Size	2" - 60"
Body Material	WCB, 316SS, Alloy materials
Trim Material	Chrome, 316SS, Stellite
Packing Material	PTFE or Graphoil
Port	Full port, Reduced port
End Connections	ANSI 150 - 1500
Temperature	-100°F to +1000°F
Seat Materials	RPTFE, Metal



DB5400 SERIES

Double Block & Bleed Plug Valve
 Rising stem
 Soft or metal seated options, hand or power operation
 Bi-directional sealing with zero leakage, little maintenance

Size	2" - 24"
Body Material	WCB, WCC, Stainless Steel, Alloy materials
Trim Material	WCB, 17-4
Packing Material	PTFE or Graphoil
Port Design	Full port
End Connections	ANSI 150 - 2500
Temperature	-20°F to +800°F
Seat Materials	Soft or metal
Options	Handwheel extension, limit switch, thermal packing, and custom painting



4665 Interstate Drive
Cincinnati, OH 45246
513.731.2900
sales@jflowcontrols.com
www.jflowcontrols.com